



Bethesda

ISSUE 3



NEWSLETTER NEWSLETTER NEWSLETTER

JULY 2014

CURVES



During the month of May Curves had a Food Run. The support towards this project was overwhelming & food to the value of +- R13000 was donated to Bethesda. We are so grateful!!



We received toiletries & 2 Nebulisers from Data Dot. They also spoil the CYCC children with a lucky packet filled with treats.

The Reformed Church ensured that each child in the Child- and Youth Care Centre received a new pair of shoes for the winter!!!
What a blessing!!!!



Blessed ~ Blessed

Lots of blessing came our way when **Jaco (Blessed Thai Pancakes)** & two of his friends decided to come & bless our Wikkellwurms & Child & Youth Care centre with delicious food & pancakes!! The children enjoyed this treat & it was such a special day!!!



PATIENT HOIST FOR INTERMEDIATE CARE FACILITY



Two **Volunteers** from the **Netherlands** identified the need for a Patient Hoist while volunteering in the ICF. They took the initiative to call on family, friends & various Congregations back home to collect money & thus help purchase this wonderful apparatus. The hoist will sure make the work for our staff a lot less strenuous!!!

KITCHEN UPGRADE MADE POSSIBLE

The **Rotary Club of Bolton (Canada)**, with the kind mediation of Rotary Club of George, made a grant allocation of **R50 000** to Bethesda. This grant will be used for the much needed upgrade of the kitchen. This process took 2 years but we are very glad & excited to now start this project!!!

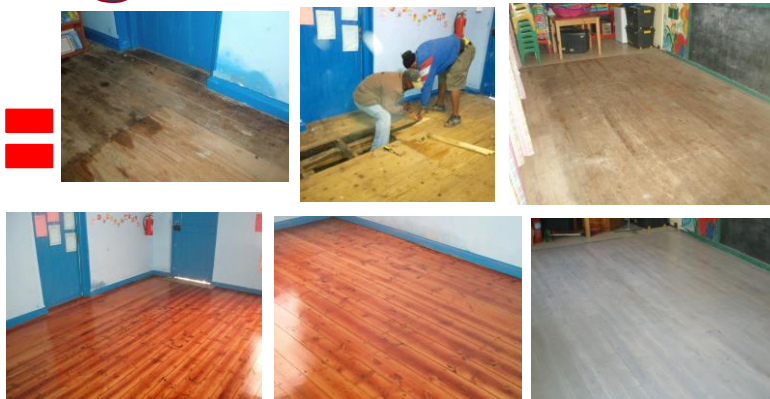


Wikkellwurms floors gets a "Facelift"



+ **CANCERVIVE**
+ **GEORGE CHEESE FESTIVAL**
+ **EDEN CONGREGATION**
+ **PRO-CRAFT FLOORING**

George Herald donated R4500 to Bethesda. This kind donation was added to donations received from abovementioned donors & we renovated the old floors!

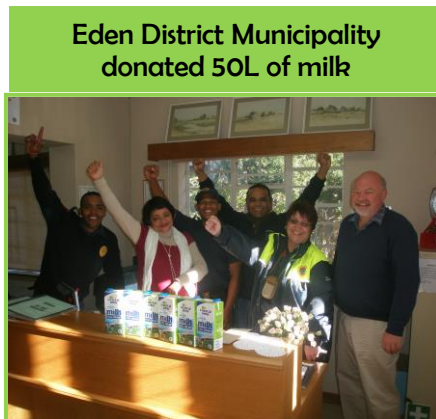


67 Nelson Mandela Day 67

minutes



Ernst & Young treated the children & spent time with them



Eden District Municipality donated 50L of milk



Tramonto made sure each child has a warm top



AVBOB painted the outside walls of Wikkeldurms



CANSA ensured the staff were treated with something sweet



Landbank donated food items to Bethesda



Invited the children for a party at the Nedbank Garden Route Mall branch



Hyatt Oubaai brought cakes for the patients



Kingswood treated the children with a picnic & hour of fun



Lumenrock had a braai for the kids & spent time with them

PLEASE VISIT OUR **NEW** & IMPROVED WEBSITE:

www.bethesdageorge.org.za

and

PLEASE GO & **LIKE** OUR NEW FACEBOOK PAGE:

https://www.facebook.com/pages/Bethesda-Medical-and-Relief-Services-NPC/1529292177298651?ref_type=bookmark



OUR DETAILS

Tel: 044-875 8088

Fax: 044-875 9963

E-mail: ceo@bethesdageorge.org.za

Address: 22 Beer Street, Rosemoor, George, 6529

P.O. Box 2586, George, 6530

NEDBANK (Branch Code: 109 114) Acc Names: Bethesda Medical & Relief Services - **Hospice** (Acc No.: 1091 128 499) or Bethesda Medical & Relief Services - **Child & Youth Care Centre (CYCC)** (Acc No.: 1091 128 510)

This Newsletter was compiled by Mandy Lucas